

SUPPORTING INFORMATION

The Supporting Information (Figures S1–S9) provide illustrations of representatives of known species mainly collected on Mount Nimba and sequenced in this study or used for comparative purposes. All specimens illustrated in Supporting Information are from Mount Nimba (Guinea) unless otherwise noted.

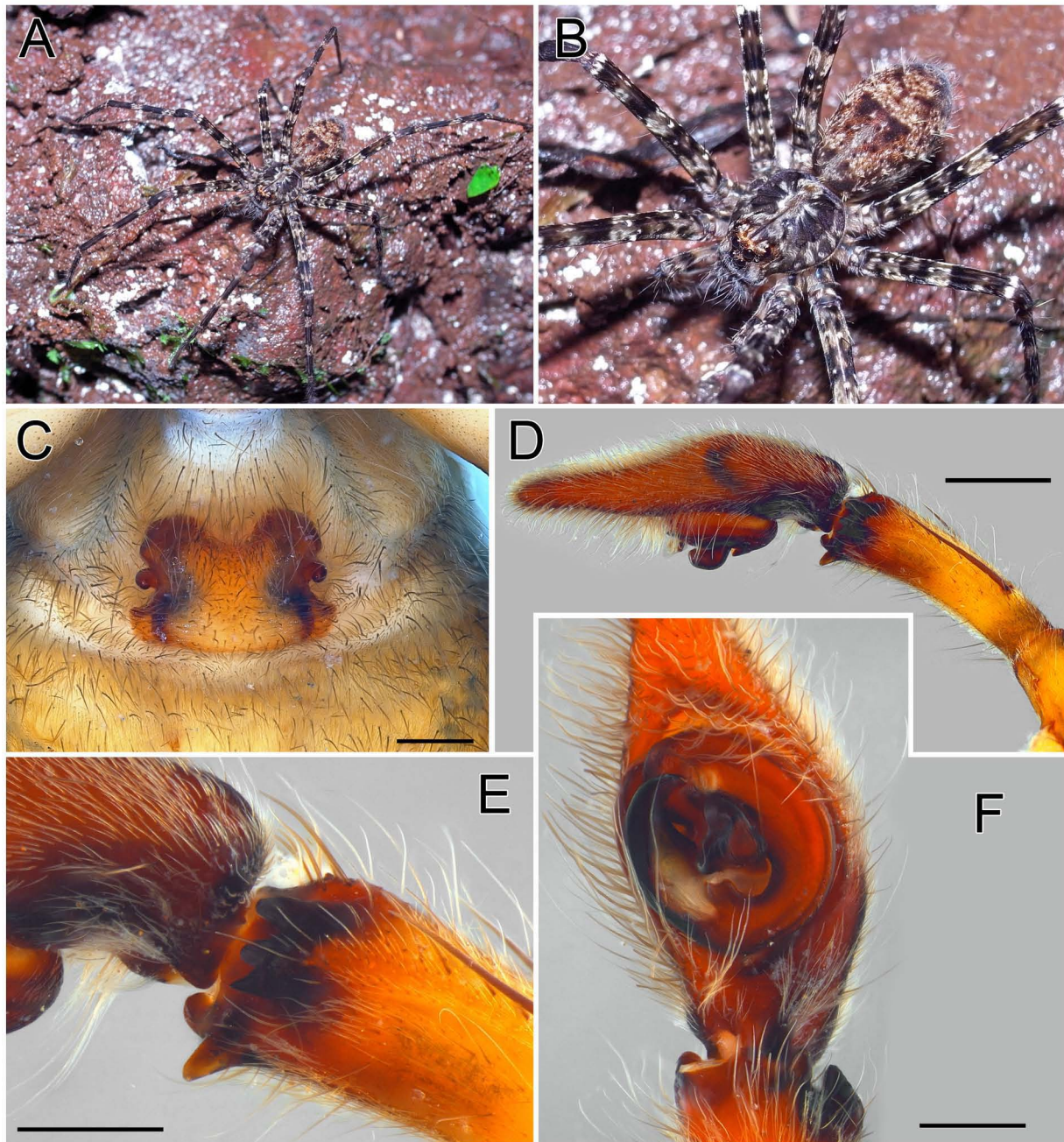


Figure S1. A–F. *Africactenus evadens* Steyn & Jocqué, 2003; A–C. female (DNA-N35, MRAC 237882); D–F. male from Diéké, Guinea (MRAC 213520); A. habitus in vivo, dorsal view; B. as previous, detail; C. epigyne, ventral view; D. palp, retrolateral view; E. as previous, detail of RTA; F. as previous, ventral view. Scale bars C, E, F = 0.5 mm; D = 1 mm.

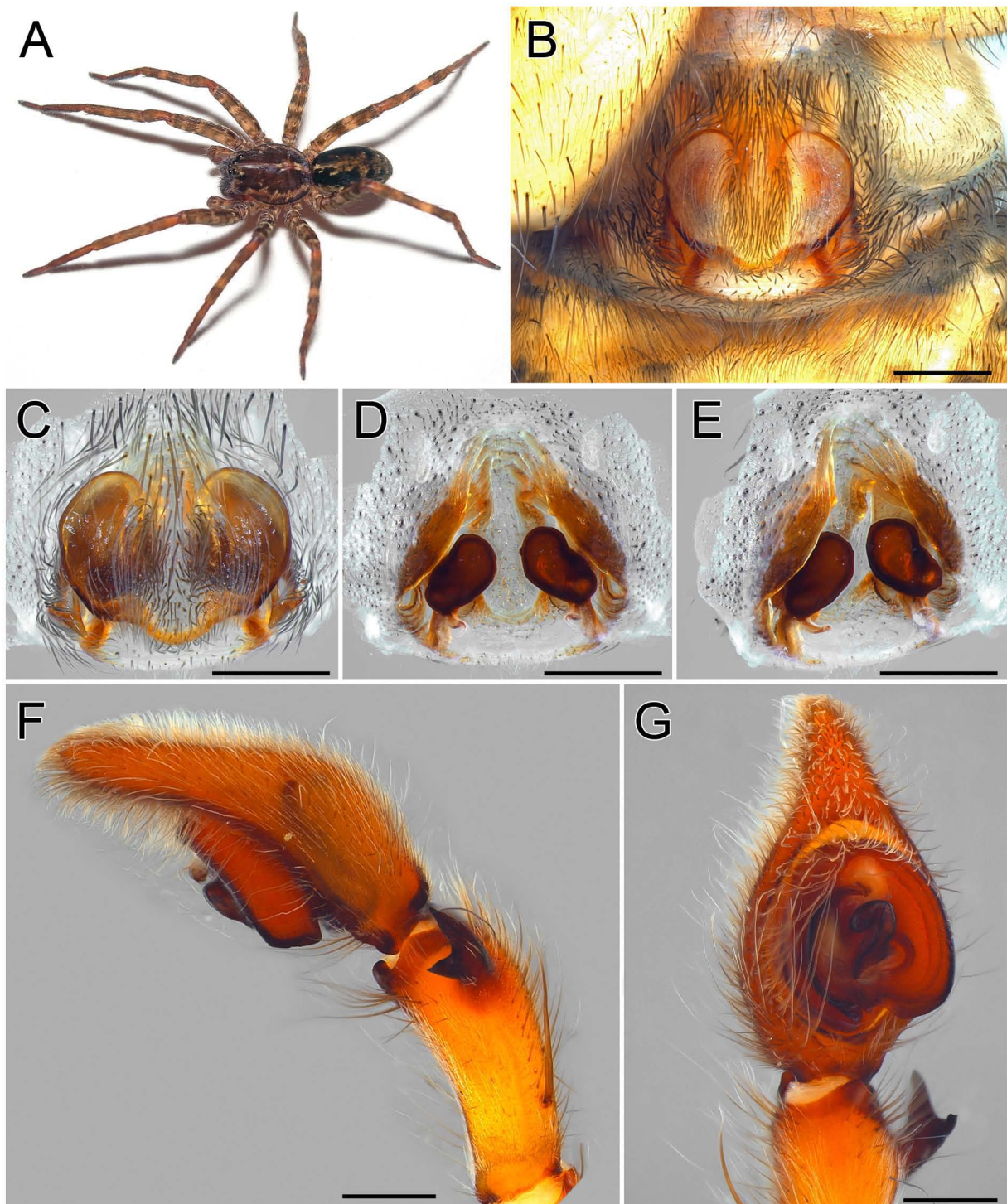


Figure S2. A–G. *Amicactenus eminens* (Arts, 1912); A–E. female (DNA-N39, MRAC 239486); F, G. male from Bossematié, Ivory Coast (MRAC 210491); A. habitus in vivo, dorsolateral view; B. epigyne, ventral view; C. as previous, after digestion; D. as previous, dorsal view; E. as previous, dorsolateral view; F. palp, retrolateral view; G. as previous, ventral view. Scale bars = 0,5 mm.

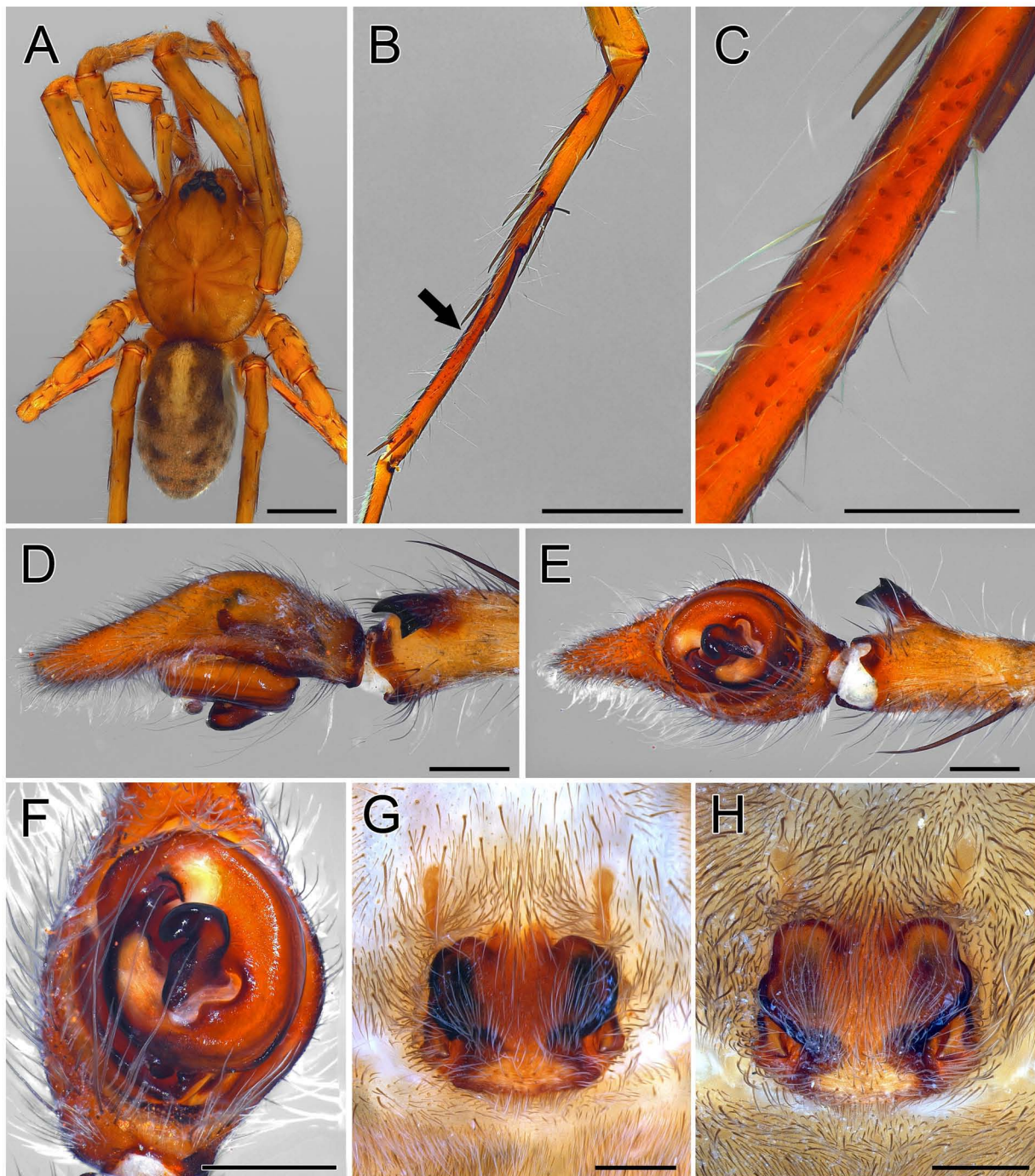


Figure S3. A–H. *Amicactenus fallax* (Steyn & Van der Donckt, 2003); A–C. male (MRAC 213506); D–F. male (DNA-N24, MRAC 238941); G. Pt female from Bossematié, Ivory Coast (MRAC 211053); H. other female from Bossematié (MRAC 211124); A. habitus, dorsal view; B. right leg IV, prolateral view, arrow indicates the modification of the Mt with field of nodules; C. as previous, detail; D. palp, prolateral view; E. as previous, ventral view; F. as previous, detail; G. epigyne, ventral view; H. as previous. Scale bars A, B = 2 mm; C–H = 0,5 mm.

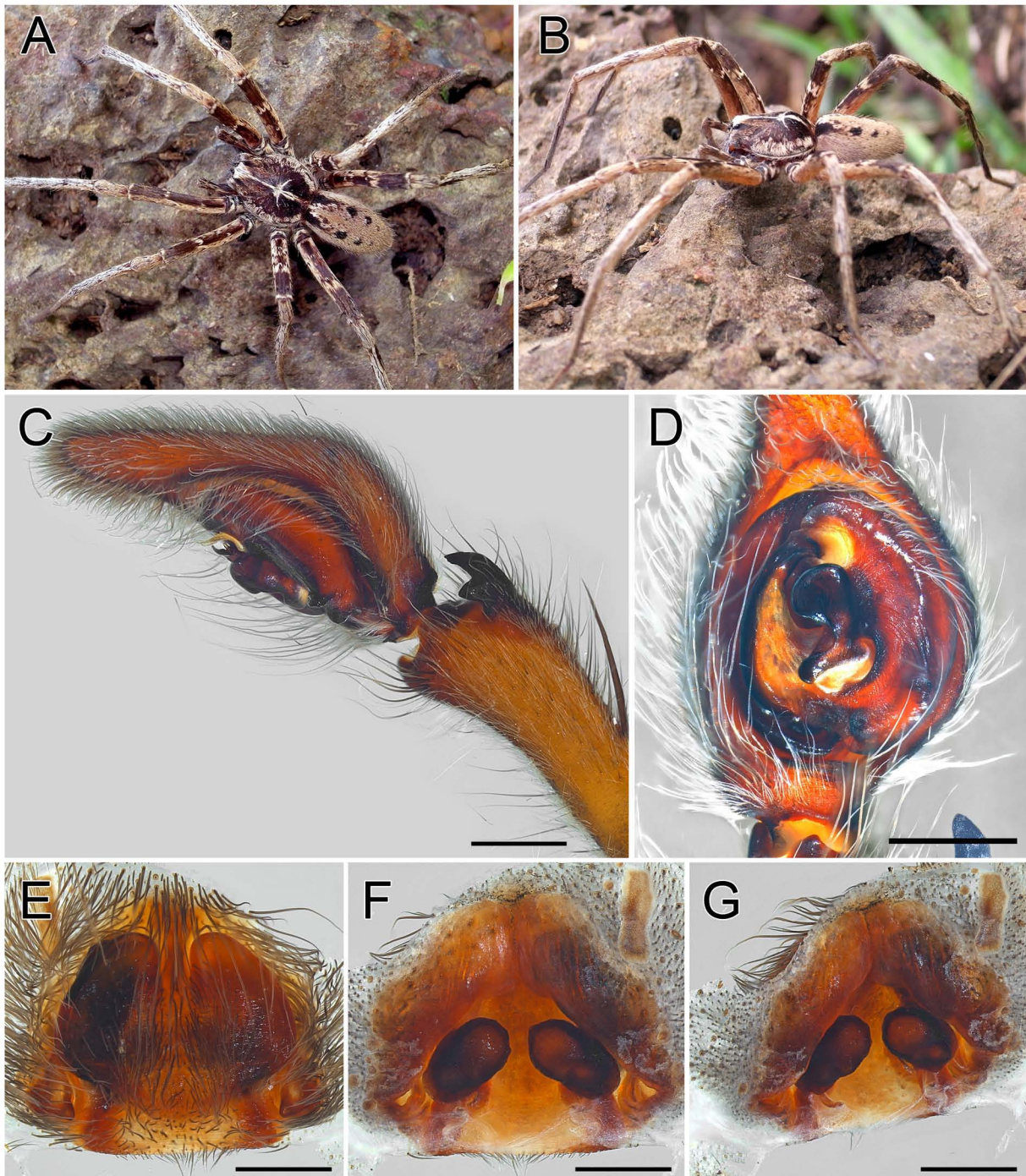


Figure S4. A–G. *Amicactenus pergulanus* (Arts, 1912); A–D. male (DNA-N07, MRAC 238913); E–G. female (DNA- N05, MRAC 225770); A. habitus in vivo, dorsal view; B. as previous, lateral view; C. palp, retrolateral view; D. as previous, ventral view; E. epigyne, after digestion, ventral view; F. as previous, dorsal view; G. as previous, dorsolateral view. Scale bars = 0,5 mm.

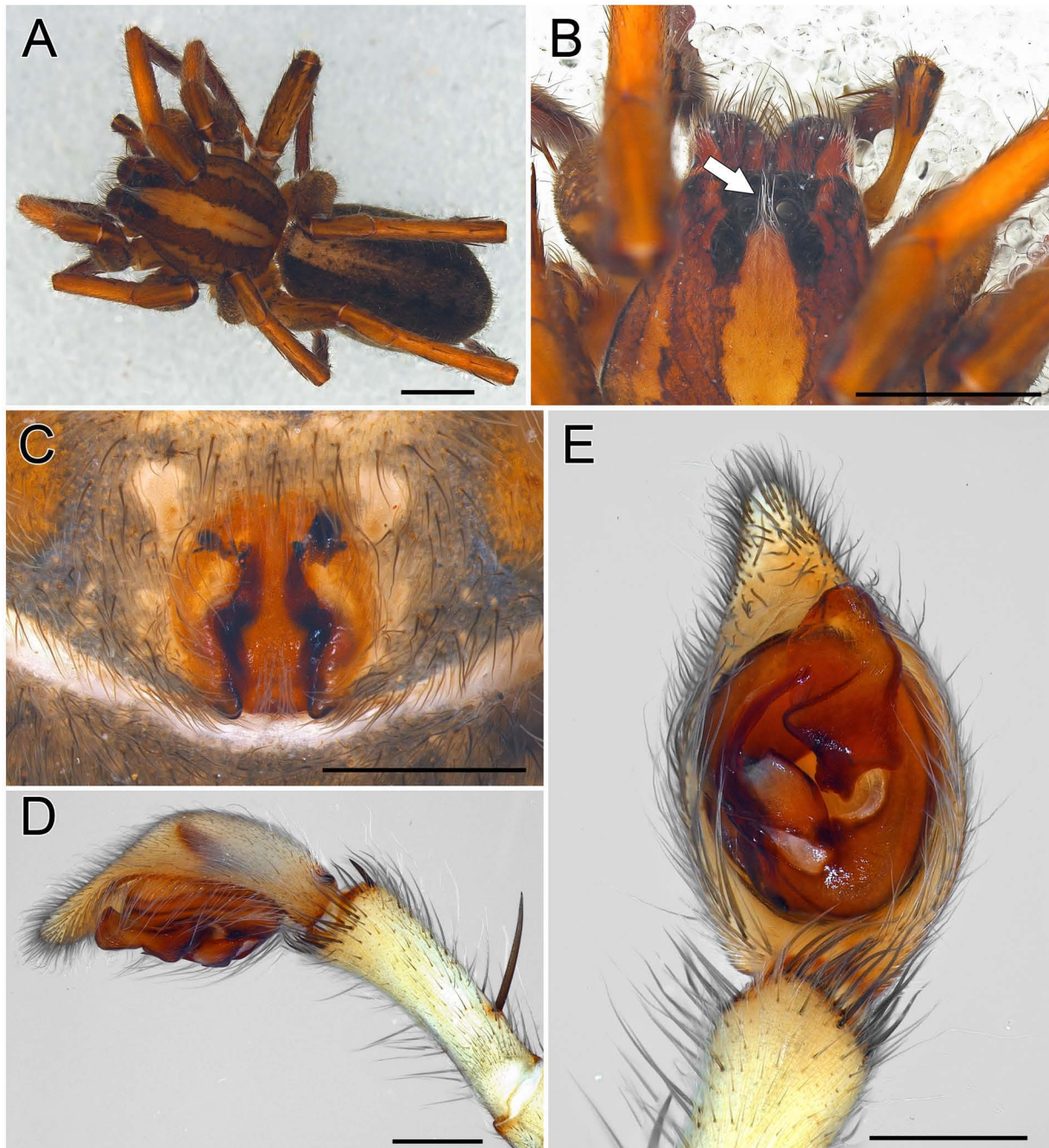


Figure S5. A–E. *Anahita aculeata* (Simon, 1896); A–C. female (MRAC 225526); D, E. male (DNA-N67, MRAC 241319); A. habitus, dorsal view; B. anterior part of carapace, dorsal view, arrow indicates the converging hairs originating from between PME; C. epigyne, ventral view; D. palp, retrolateral view; E. as previous, ventral view. Scale bars A, B = 2 mm; C–E = 0,5 mm.

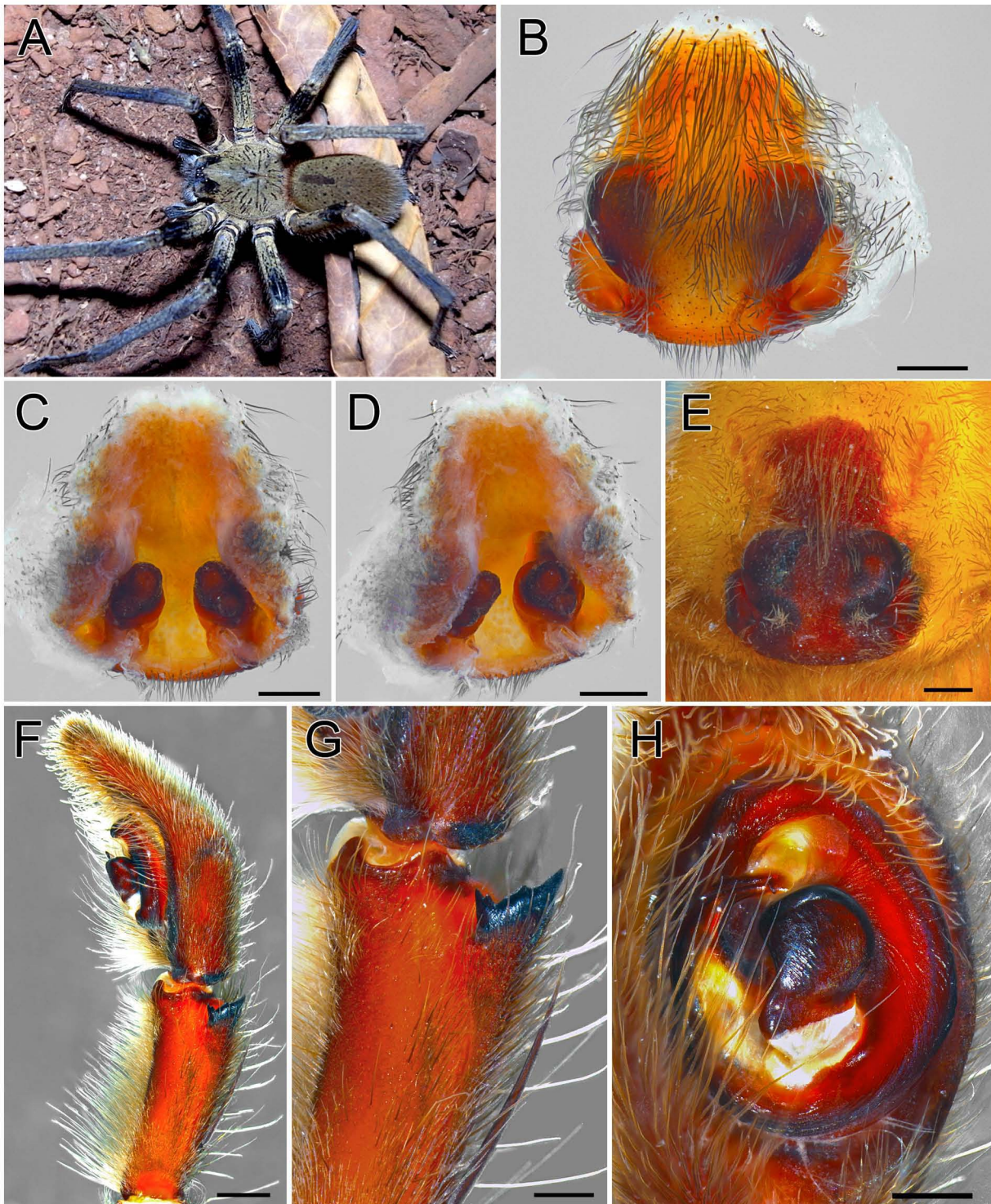


Figure S6. A–H. *Macroctenus kingsleyi* (F. O. Pickard-Cambridge, 1898); A–D. female (DNA-N03, MRAC 238214); E. female from Mabi, Ivory Coast (MRAC 200917); F–H. male from Bossematié, Ivory Coast (MRAC 210245); A. habitus in vivo, dorsal view; B. epigyne, after digestion, ventral view; C. as previous, dorsal view; D. as previous, dorsolateral view; E. epigyne, dorsal view; F. palp, retrolateral view; G. as previous, detail of RTA; H. as previous, ventral view. Scale bars B–E, G, H = 0,5 mm; F = 1 mm.

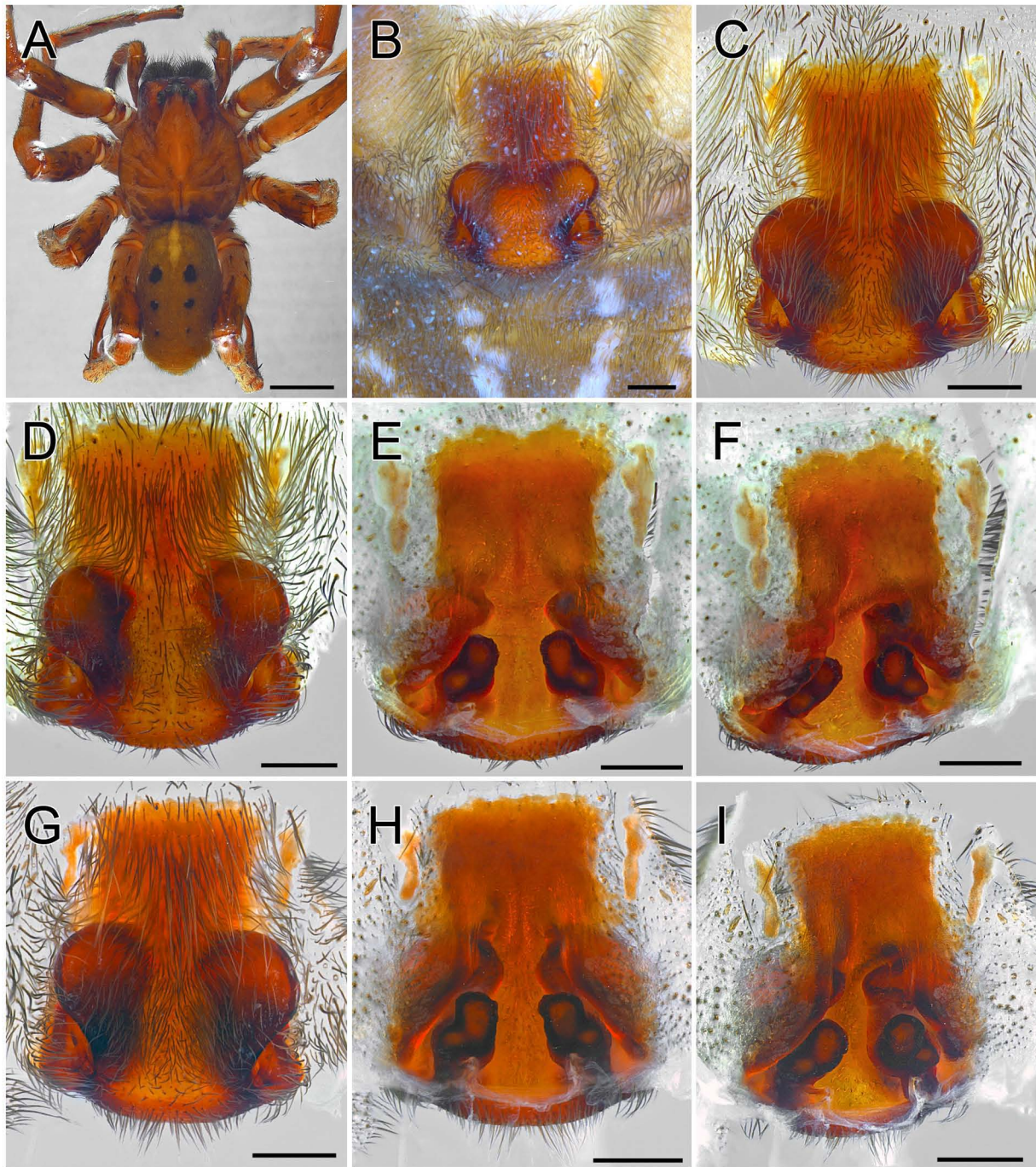


Figure S7. A–I. *Macroctenus occidentalis* (F. O. Pickard-Cambridge, 1898); A–C. female from Diéké, Guinea (DNA-N40, MRAC 213525); D–F. female (DNA-N04, MRAC 238227); G–I. female from Zياما, Guinea (DNA-N41, MRAC 213502); A. habitus, dorsal view; B. epigyne, ventral view; B, D, G. as previous, after digestion; E, H. as previous, dorsal view; F, I. as previous, dorsolateral view. Scale bars A = 5mm; B–I = 0,5 mm.

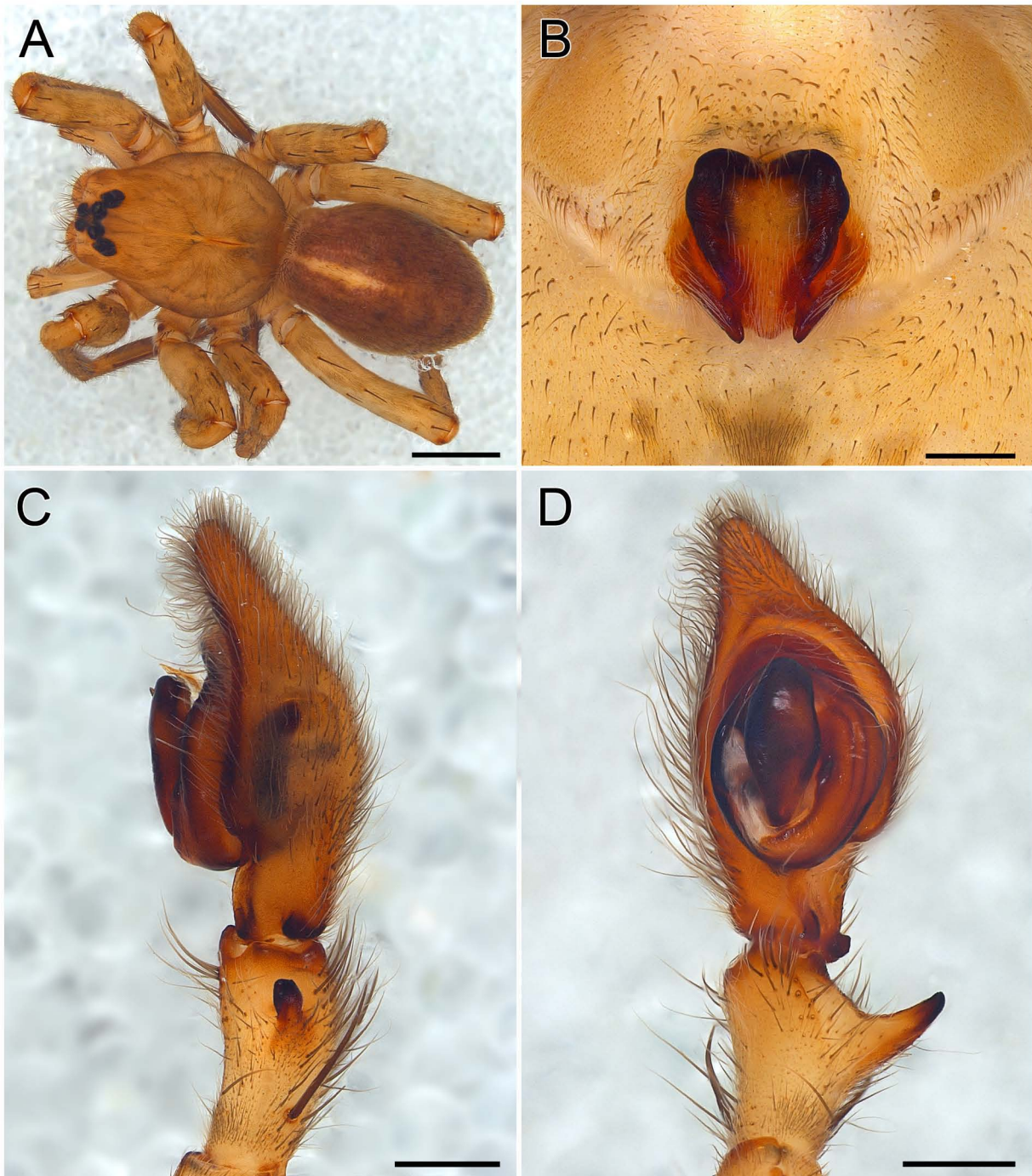


Figure S8. A–D. *Petaloctenus cupido* Van der Donckt & Jocqué, 2001; A–B. female (MRAC 239208); C–D. male (DNA-N27, MRAC 238927); A. habitus, dorsal view; B. epigyne, ventral view; C. palp, retrolateral view; D. as previous, ventral view. Scale bars A = 2 mm; B–D = 0,5 mm.

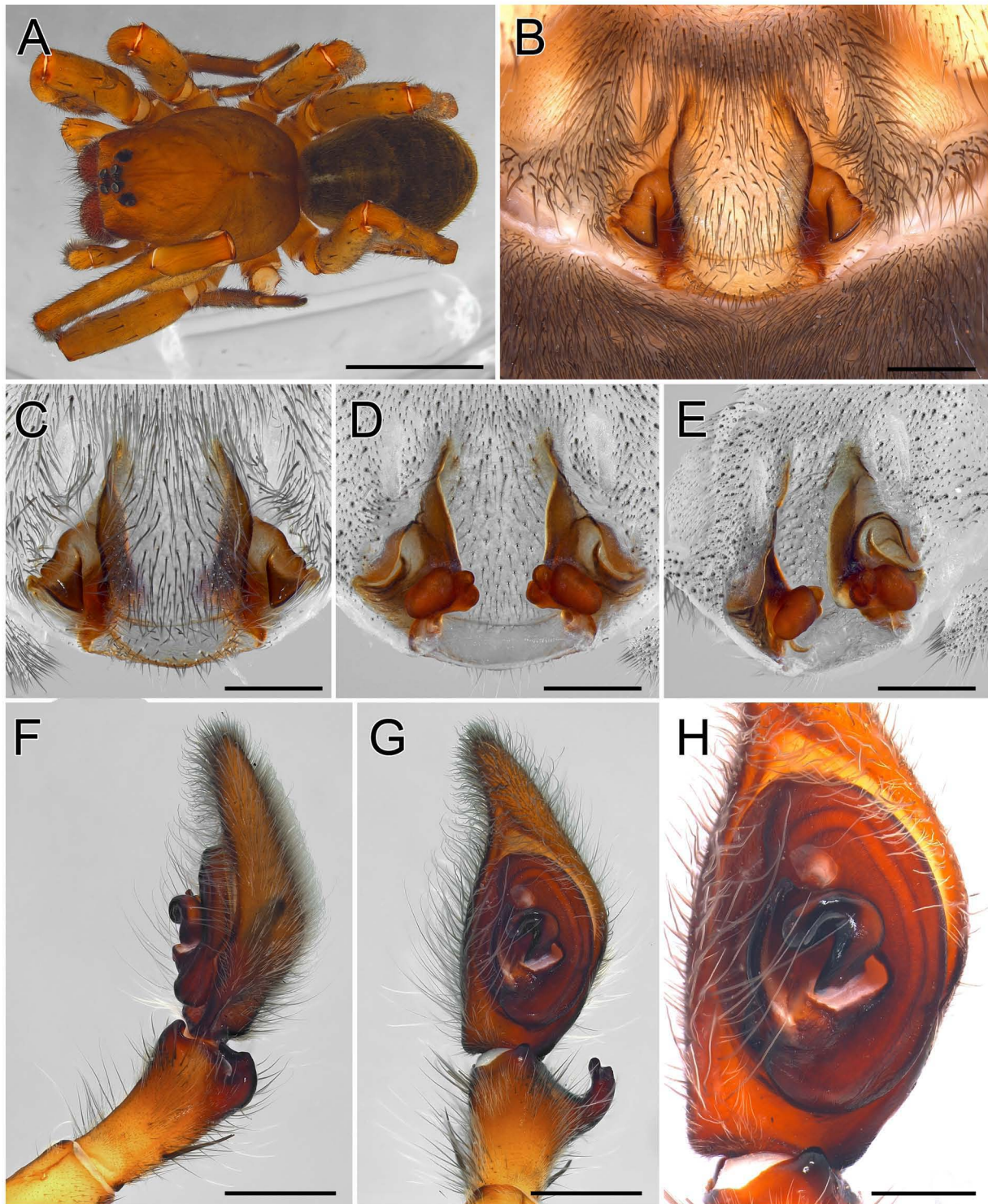


Figure S9. A–H. *Piloctenus mirificus* (Arts, 1912); A–E. female (DNA-N33, MRAC 238951); F–H. male (DNA-N22, MRAC 238940); A. habitus, dorsal view; B. epigyne, ventral view; C. as previous, after digestion; D. as previous, dorsal view; E. as previous, dorsolateral view; F. palp, retrolateral view; G. as previous, ventral view; H. as previous, detail. Scale bars A = 5 mm; B–E, H = 0,5 mm; F, G = 1 mm.